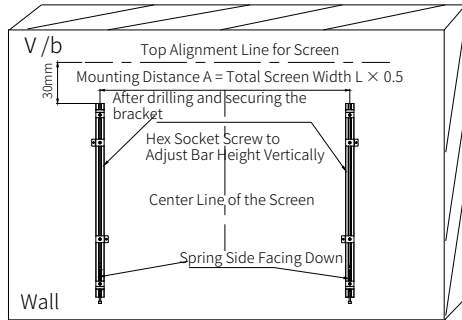


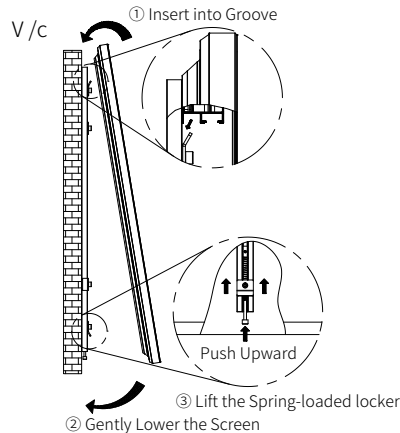
#### V/b. Determine Installation Position and Fix Wall Brackets

Calculate the projection ratio of the projector to determine the top alignment line and horizontal center line for the screen. Mark these lines on the wall. Measure the total screen width L, then calculate the distance between the two wall brackets using the formula:  $A = L \times 0.5$ . Place the mounting bars 30 mm below the top alignment line on the wall, with the spring side facing downward. Use these positions to determine the mounting hole locations. Drill holes and insert plastic expansion anchors, then use  $\phi 5 \times 40$  screws to secure the wall brackets. To make height adjustments, loosen the M6  $\times$  10 hex socket screws on the wall brackets.



#### V/c. Hang and Center the Screen

With two people, lift the assembled screen horizontally and slightly tilt it to insert it into the groove of the wall-mounted bracket. Once securely hooked, gently lower the screen into place. Project an image onto the screen and gently shift it left or right until it is centered with the projected image. Finally, push up the spring-loaded locking tab located at the bottom of the mounting bar to lock the screen in place and complete the installation.



## VI. Screen Cleaning

Cleaning Method for Ultra Short Throw Ambient Light Rejecting (ALR) Screens: (Do not wipe the screen with a cloth!)

- Use a soft-bristle brush to gently sweep across the screen horizontally, following the texture of the screen surface, to remove dust or fine particles.
- For light stains that do not affect image quality, no cleaning is necessary. If the stain does affect viewing, you may use non-residue adhesive tape to lift it off carefully.

Cleaning Method for Standard Long Throw Screens

You may gently wipe the screen surface using clean water or a mild detergent to remove stains. (Do not use any corrosive cleaning agents!) After cleaning, allow the screen to air dry or gently absorb the moisture before retracting or storing the screen.

Guangzhou Grandview Creative Technology Co., Ltd.

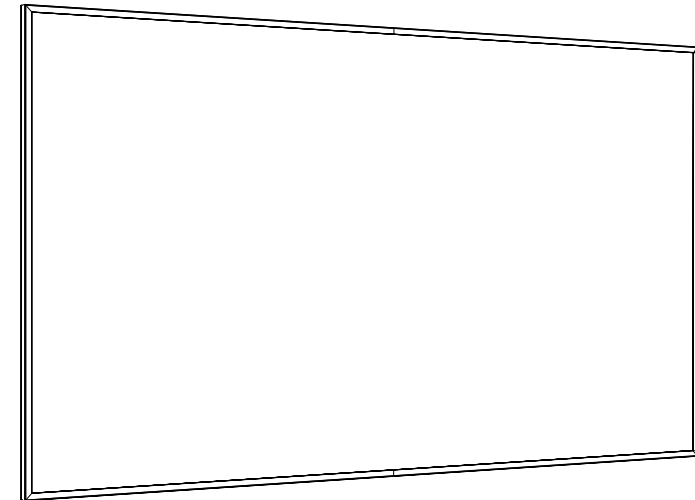
Add: No.43 S, Guomao Ave. Hualong, Panyu, Guangzhou, Guangdong, P.R.C Tel: +8620-8489-9499 Fax: +8620-8480-5299  
Web: www.grandviewscreen.com



# Grandview®

## Edge-Lite Series S7 Fixed Frame Manual

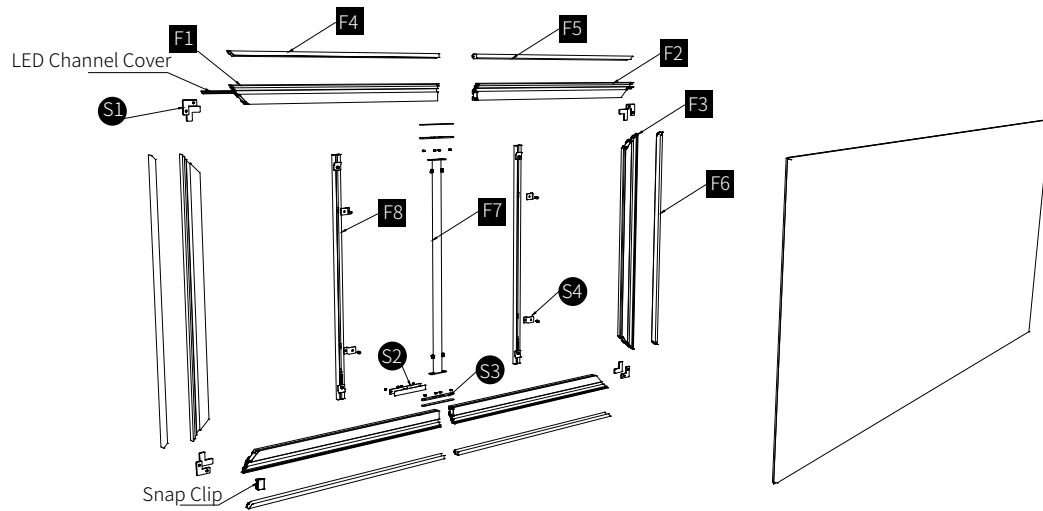
Model: PE-Yxxx (S7)10  
PE-Yxxx (S7)15



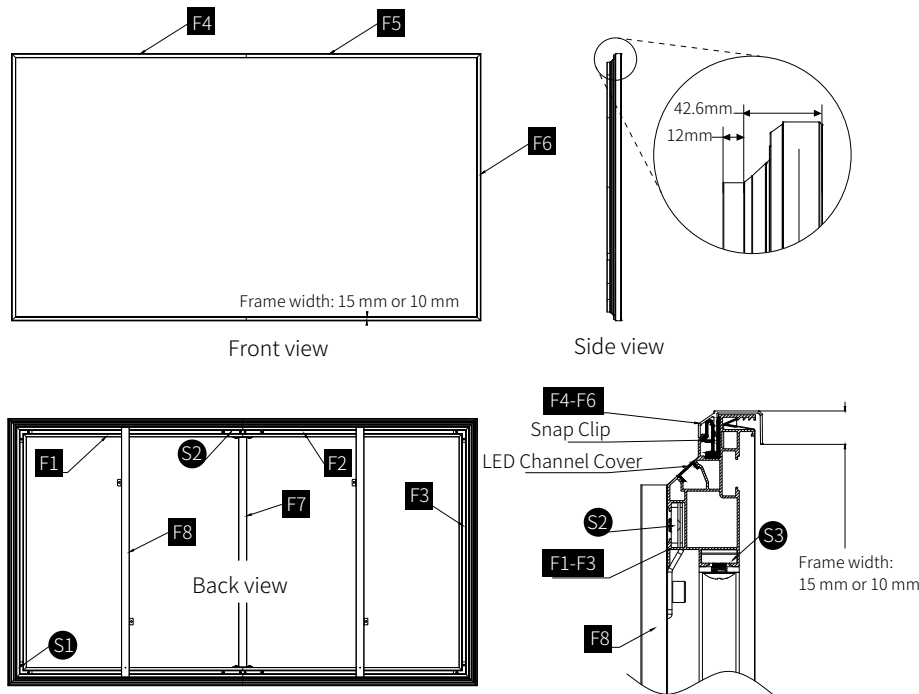
### Reminder

- Thank you for choosing Grandview products. Before installation and use, please read the instruction carefully and keep it for future reference.
- Please assemble the screen in a flat and clean area, which is beneficial to protect the screen fabric and ensure the assembly effect of the frame.
- The edges of the screen frame may be sharp. Please handle with care during assembly to avoid cuts or injury.
- If you have purchased an ultra-short-throw anti-light screen, please ensure the screen is installed in the correct orientation.
- The screen fabric is relatively thin. Do not pull or stretch it forcefully during installation to avoid damage.

## Exploded View

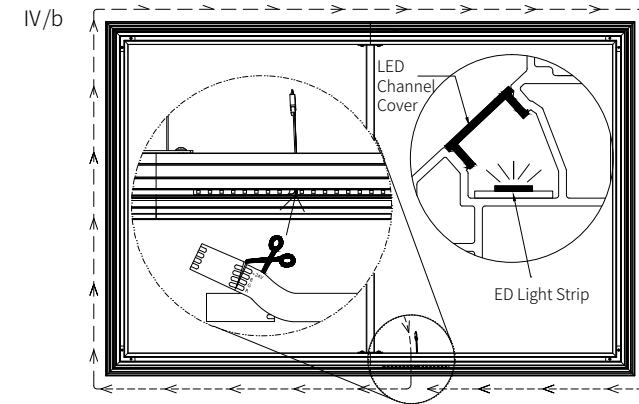


## Diagram



### IV/b. LED Strip Installation

Locate the long, rectangular cable hole on the horizontal frame section. Take the end of the LED strip with the soldered connector and feed it through the cable hole in the frame. While peeling off the adhesive backing, carefully stick the LED strip along the inner side of the light cover groove, following the perimeter of the frame. If any excess length remains, trim the LED strip at the designated cut line marked on the strip.



### IV/c. Power Connection and Control

Connect one end of the extension cable to the LED strip, and the other end to the integrated power and control box. Plug in the power adapter to light up the LED strip. For detailed control functions, please refer to the QR code.

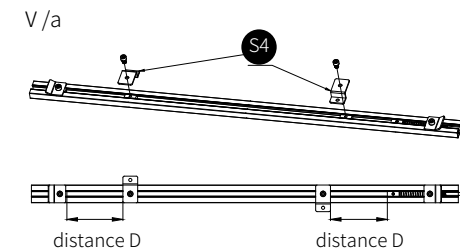


Mobile App for LED Strip Control

Scan the QR code to download the app.

## V. Wall Mount Installation of the Screen (F8, S4)

V/a. Take two S4 brackets and lock them on both sides of the mounting bar, facing each other. Leave a certain distance D from each bracket to the nearest T-shaped nut. This distance D corresponds to the adjustable mounting height in the following steps.



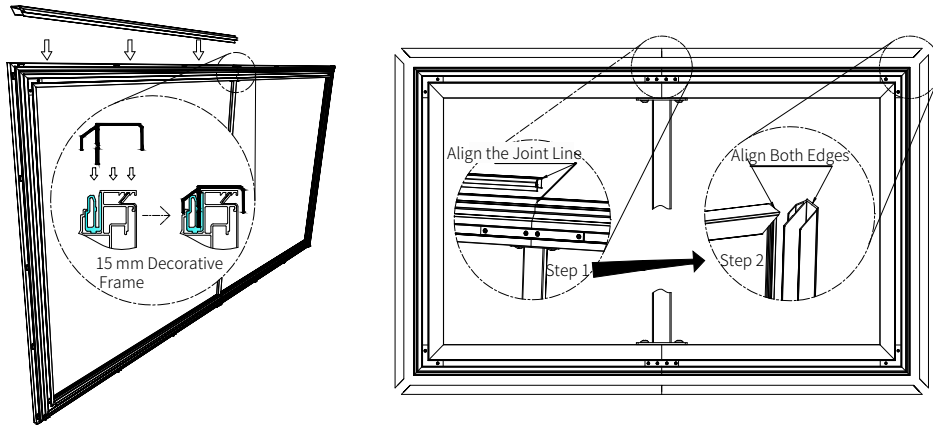
### III. Decorative Frame Installation (F4、F5、F6)

Remove the decorative trims before screen installation.

#### Installation Method:

First, align the center joint line of the trim so that it is centered evenly on both the left and right sides. Insert the trim strip into the pre-installed plastic clip channel — press down firmly as a certain amount of force is required. Once the top and bottom decorative trims are in place, align the four corner edges and continue inserting them into the clip channels.

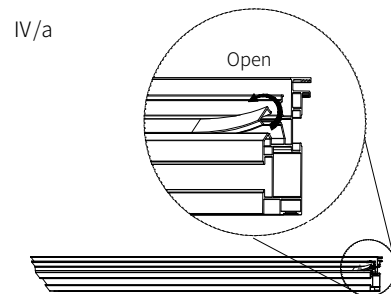
The assembly of the decorative frame is now complete.



### IV. LED Strip Installation

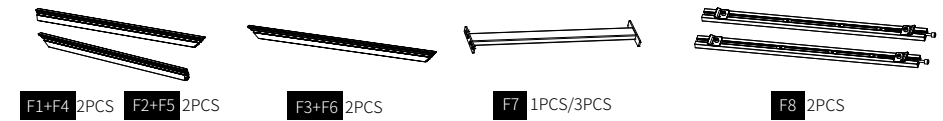
If you have purchased a model with an optional LED light strip, you will need to install the LED strip yourself.

IV/a. Use your fingernail or a flat tool to lift and open all the LED light channel covers.

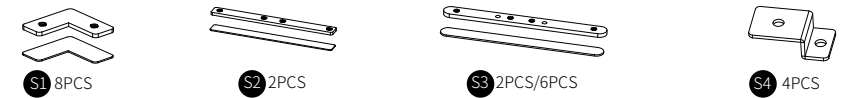


### Screen Components

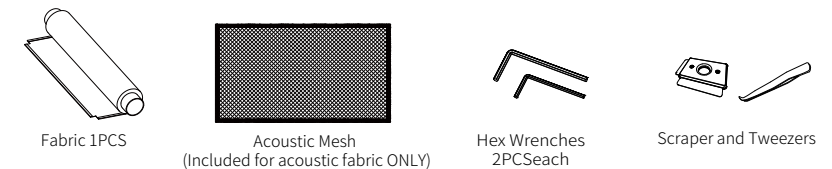
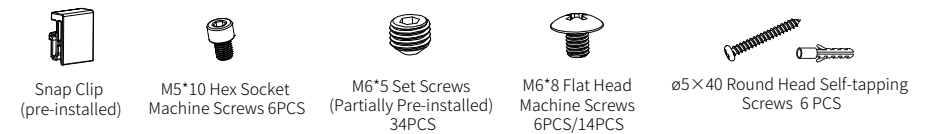
#### Frame set F



#### Lock set S



#### Other



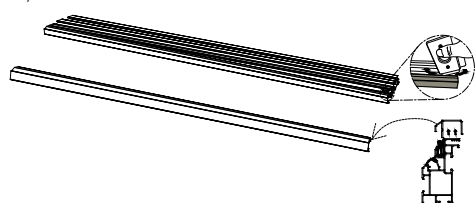
Note:  
For screen sizes over 150 inches, three **F7** support bars are included.  
An extra 2 pieces are provided for each type of screw.

#### Optional LED Light Strip Kit



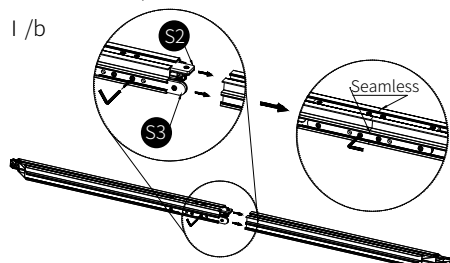
## I .Inner Frame Assembly (F1、F2、F3、F7、S1、S2、S3)

I /a



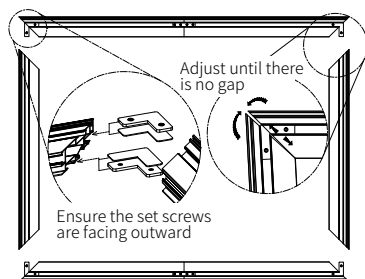
I /a. To save packaging space and reduce transportation costs, the decorative frame components (F4-F6) are pre-inserted into the matching inner frame at the factory. You must first remove the decorative trims before proceeding with screen installation.

I /b



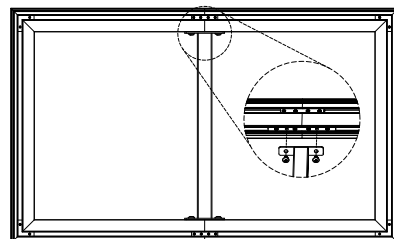
I /b. Take out components F1 and F2. One of the frame sections already has connectors S2 and S3 pre-installed. Loosen the set screws with hex wrench, pull out the connectors, and insert them into the other frame. Slide the two sections until they are centered left and right, adjust them until there is no visible gap, and then fully tighten all the set screws to complete the connection of the two horizontal frame pieces.

I /c



I /c. Take a pair of F3 components and the previously connected horizontal frame, and position them opposite each other to form a rectangle. Insert two S1 connectors into the large grooves of the aluminum profiles (make sure the set screws are facing outward). Align the joints, then tighten the set screws to secure the corners.

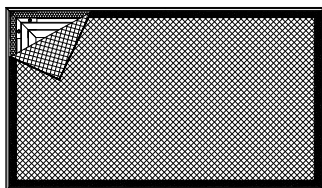
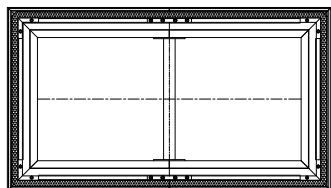
I /d



I /d. Insert the F7 support bars into the inner frame (use three bars for screen sizes exceeding 150 inches). Align them with the pre-installed S3 components and fasten securely using M6×8 machine screws to complete the frame assembly.

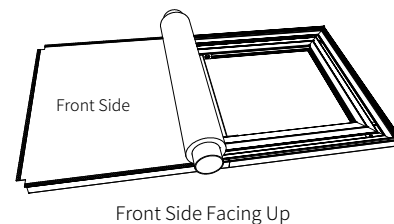
## Acoustic Fabric Installation

If you have selected an acoustically transparent screen, you will need to install the black acoustic mesh fabric. Simply use the pre-installed hook-and-loop fasteners (Velcro) to attach the acoustic fabric, ensuring it covers the frame completely.

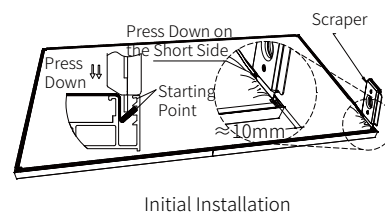


## II .Screen Fabric Installation

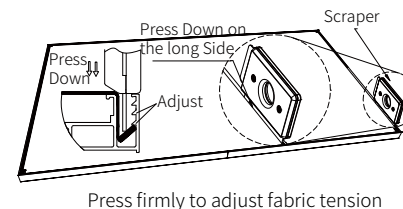
II /a



II /c



II /e



### Installation Method

a. Flip the frame over so that the front side is facing up. Place the screen fabric over the top surface of the frame, and rotate the winding tube to lay the fabric completely flat.

b. Pull the screen fabric outward to fully cover the frame, making sure it is perfectly aligned with all edges.

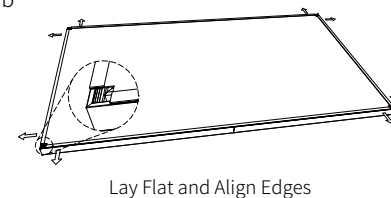
c. This screen uses a snap-in bar installation method. Use the provided Scrapper to press the inner edge of the snap bar into the serrated slot on the frame to secure the fabric. Begin by lightly pressing in the short sides first. Once all four sides are positioned, apply more force on the long sides for final tension adjustment.

d. Installation details: Approximately 10 mm from the edge of the screen fabric, use the Scrapper to gently press into the serrated groove. The installation sequence is: First press the four corner points (Point A); Then press the center points (Point B); Finally press along the edge lines (Point C) from the center outward. This sequence ensures accurate initial positioning and firm fixation of the fabric.

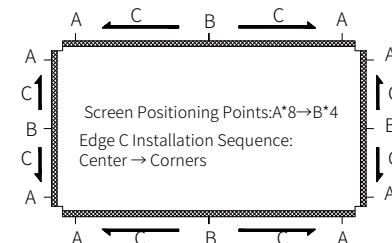
e. Flatness Adjustment: If some areas appear loose after initial installation, use the tensioning tool to press the snap bar further down into the slot to increase the fabric tension.

f. Reinstallation for Wrinkles: If any wrinkles cannot be smoothed out, use tweezers to lift the screen fabric from the snap slot at the four corners. Gently lift the fabric, slit it with the tweezers if needed, and reinstall it for a smooth finish.

II /b



II /d



II /f

