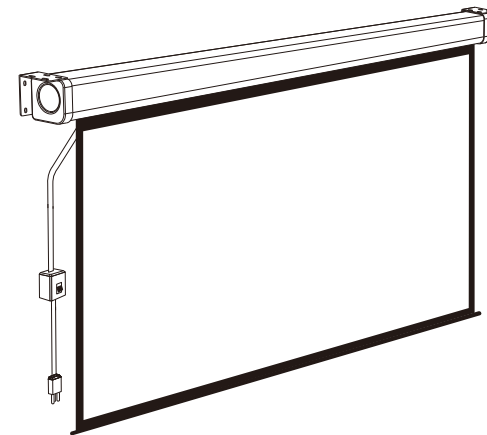


# Grandview<sup>®</sup>

## Instruction Manual for CNV Series Motorized Screen

Grandview<sup>®</sup>



Model : CN-Mxx

**Guangzhou Grandview Creative Technology Co., Ltd**

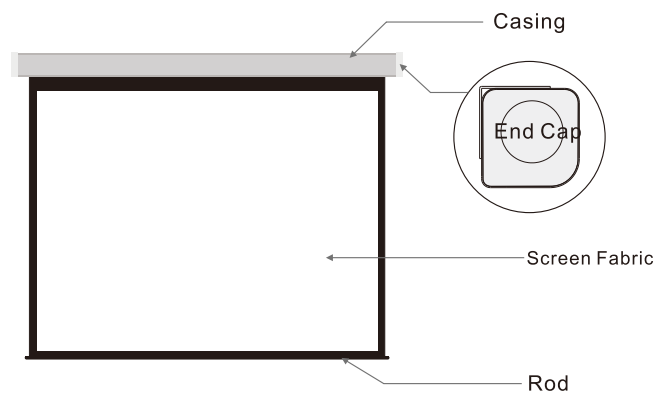
Add: No.1 Building of No.43 South International Trade Avenue, Hualong Town,  
Panyu District, Guangzhou China.  
Tel: +8620-8489-9499 Fax: +8620-8480-5299  
Web: [www.grandviewscreen.com](http://www.grandviewscreen.com)



Thank you for purchasing a Grandview projection screen.

Before use, please read instructions carefully. After installation, store instructions for future reference.

## Description



## Accessories

- $\varnothing 5$  Adjustment Key (1pc)
- Instruction Manual (1pc)



## Optional

- $\varnothing 10 \times 40$  mm Expansion Screw



### CNV Motor Specification

Voltage(V)	Frequency(Hz)	Watts (W)	Application
230V/120V/100V	50Hz/60Hz	150W/150W	Applicable to motorized screens over 50"

## Cautions

- 1.The ceiling or wall used for fixture installation must be secure to prevent the screens from falling.
- 2.While installing electrical motors, please hire professionals or your local dealer to ensure safety. A misconnection may lead to fire or leaks.
- 3.Keep all infrared wireless products away from fluorescent lighting as it may cause malfunctions.
- 4.Please read the following as any damage to the screen surface will affect the quality of the picture:
  - a.Avoid contact or touching the screen surface as it may cause scratches or tears.
  - b.Do not write or draw on the surface
  - c.Clean the screen with a soft cloth and lukewarm water. Do not use any detergent or cleaning products.
  - d. Please do not use corrosive cleaning agents to clean the screen.
- 5.Roll up the screen after every use. Ensure that the screen is level when installing; do not pull on the sides or fold the screen.
- 6.To prevent unnecessary damage, the operating and maintenance of the screen should be done by adults.

⚠ Ignoring the safety warnings may lead to injuries and/or damaging the product.	⚠ Fixtures should be installed in a secure place to avoid accidents or the screen falling.
⚡ Do not connect any electrical attachments or remote controls.	⚠ Roll up the screen after every use . Leaving it hanging for a long period of time may cause the fabric to loosen.
🛠 Please contact your local dealer for repairs or maintenance. Please contact our company if you have any further questions . Avoid taking apart the fixtures yourself. Loose parts may cause the screen to fall.	🚫 Refrain from hanging anything on the screen as it may cause the screen to fall.

Do not take apart and replace with unknown parts. If there are any problems, please contact your local dealer. Product specifications are subject to change.

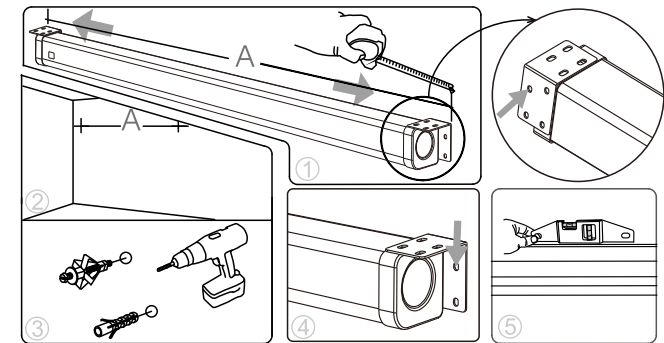
## Installation

This screen should be installed at the best viewing angle, and perfect installation will improve the image. Take out all the parts from the packaging and follow the accessories guideline to ensure you have all parts, and then follow the operations to install.

Select an installation according to the material of wall or ceiling. (Recommendation: select  $\phi 10 \times 40$  wood screws for wood wall or ceiling; select  $\phi 10 \times 40$  tapping screws with anchor for concrete wall or ceiling).

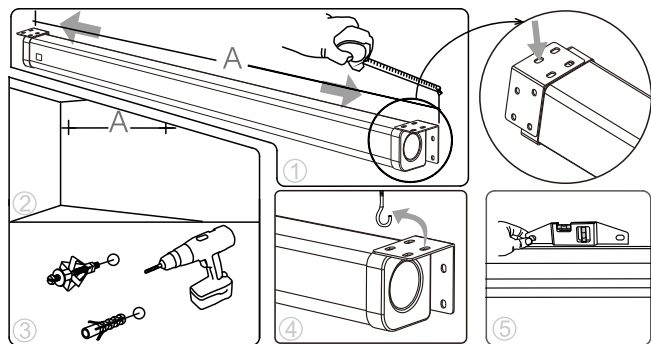
### 1.Wall Mount

Use a tape measure, to measure the distance between two keyholes (figure 1). According to the measurement, drill the identical holes of the appropriate size on the wall and ensure that they are on the same level (figure 2 and 3). Screw in two screws, and then fasten the screws on the two sides of screen. Finally, please hang on the casing (figure 4) and ensure whether the screen keeps balance (figure 5).

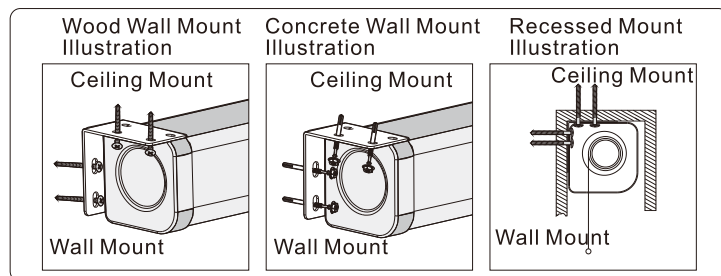


## 2.Ceiling Mount

Use a tape measure, to measure the distance between two keyholes (figure 1). According to the measurement, drill the identical holes of the appropriate size on the wall and ensure that they are on the same level (figure 2 and 3). And then, drill two Screw Hooks (no accessories) into these identical holes and buckle the brackets on two ends (figure 4). After hanging, please ensure whether the screen keeps balance (figure 5)



Wall and Ceiling Mount Illustration



## Product Instruction

Infrared Remote Control and In-Line Switch are available for this motorized screen.

### 1)In-Line Switch (Figure 1)

a) Please put down the plastic cover of rod and ensure whether it stuck with casing.

b) Connect power (prescribe voltage range)Screen Extending (Figure 2)

### Screen Extending (Figure 2)

Press lower button "=" of the switch to extend the screen slowly. The screen will stop automatically at maximized position.

Screen retracting (Figure 3)Press upper button "-" of the switch to retract the screen slowly. The screen will stop automatically when return to the casing completely.

Stop Press middle button "●" of the switch to stop the screen at a desired position.

"—"Upper Button"="Lower Button"●"Middle Button

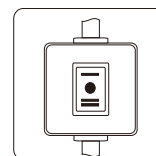


Figure 1

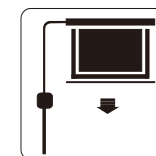


Figure 2

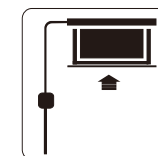


Figure 3

### 2) Infrared Remote Controller (optional) Instruction for In-Line Switch (please read the controlling instruction)

#### Attention:

- > Please make sure there is no dust or dirt on the fabric surface before rolling it back to the casing
- > The recommended working time is less than 50 seconds. The motor will enter overheating protection status and stop working for every continuous 4 minutes operation, user would need to wait for a while until the motor cool down before operating again.
- > There is no lube needed for the motor. Please be noticed that the appropriate setting is optimized which requires no further adjustment, please consult the after sales team before adjusting the limits.

