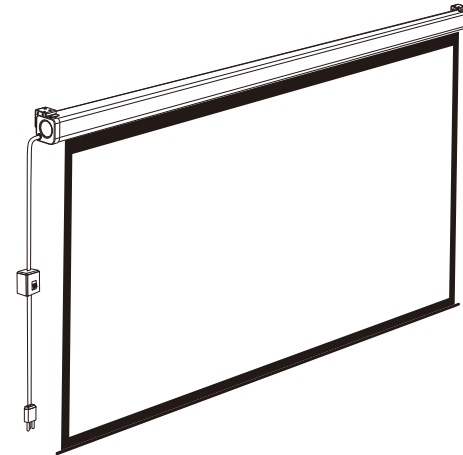


# Grandview<sup>®</sup>

## Instruction Manual for CNV Series Motorized screen

---

Grandview<sup>®</sup>



Model CN-Mxx

### Guangzhou Grandview Creative Technology Co., Ltd

Add: No.1 Building of No.43 South International Trade Avenue, Hualong Town,  
Panyu District, Guangzhou China.

Tel: +8620-8489-9499 Fax: +8620-8480-5299

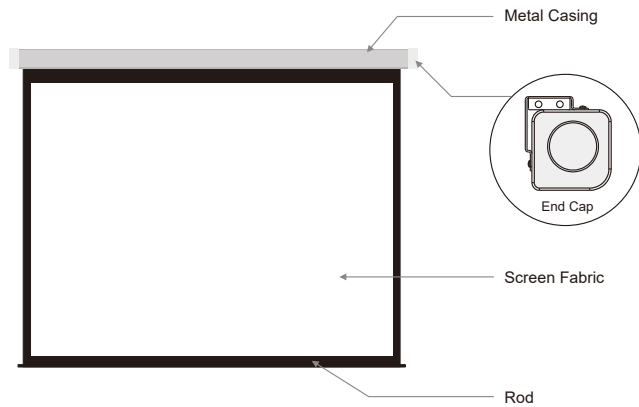
Web: [www.grandviewscreen.com](http://www.grandviewscreen.com)



Thank you for purchasing a Grandview projection screen.

Before use, please read instructions carefully. After installation, store instructions for future reference.

## Description



## Accessories

■  $\phi$  5 x 40 mm Screw ( 8 pcs )



■  $\phi$  5 mm Allen Key (1pc )



■ Installation Manual (1pc )

## Warnings

- The ceiling or wall used for fixture installation must be secure to prevent the screens from falling.
- While installing electrical motors, please hire professionals or your local dealer to ensure safety. A misconnection may lead to fire or leaks.
- Keep all infrared wireless products away from fluorescent lighting as it may cause malfunctions.
- Please read the following as any damage to the screen surface will affect the quality of the picture:
  1. Avoid contact or touching the screen surface as it may cause scratches or tears.
  2. Do not write or draw on the surface
  3. Clean the screen with a soft cloth and lukewarm water. Do not use any detergent or cleaning products.
- Roll up the screen after every use. Ensure that the screen is level when installing; do not pull on the sides or fold the screen.
- To prevent unnecessary damage, the operating and maintenance of the screen should be done by adults.



Ignoring the safety warnings may lead to injuries and/or damaging the product.



Fixtures should be installed in a secure place to avoid accidents or the screen falling.



Do not connect any electrical attachments or remote controls.



Roll up the screen after every use . Leaving it hanging for a long period of time may cause the fabric to loosen.



Please contact your local dealer for repairs or maintenance. Please contact our company if you have any further questions . Avoid taking apart the fixtures yourself. Loose parts may cause the screen to fall.



Refrain from hanging anything on the screen as it may cause the screen to fall.

Do not take apart and replace with unknown parts. If there are any problems, please contact your local dealer. Product specifications are subject to change.

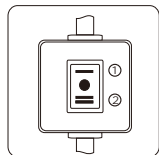
## Motorized Screen Power Specifications

Voltage	Frequency	Watts	Application
230V/120V/100V	50Hz / 60Hz	36W/36W	Applies up to 120" motorized screens

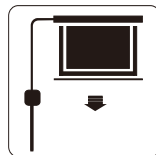
## Instructions

Grandview projection screens are controlled by a manual switch or an automatic remote control.

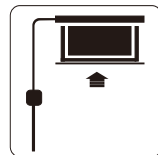
1. Tear off the glue cloth fixed on the bottom rod, ensure the bottom rod is not stuck by the casing.
2. Manual switch control
  - a. Connect to a power source (Please make sure it is the right voltage)
  - b. Turn the switch to position 2 to lower the screen. When it is all the way down, it will stop automatically.
  - c. Turn the switch to position 1 to retract the screen. When it is all the way up, it will stop automatically.
  - d. To stop any time while the screen is in motion, turn the switch to 0.



Picture 1



Picture 2

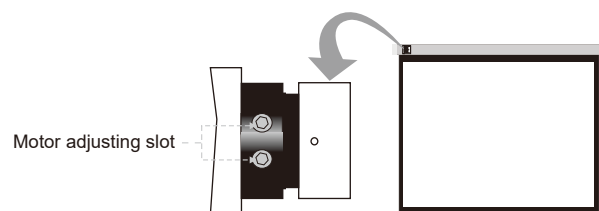


Picture 3

3. Automatic remote control (Please see section on Remote Control)

### Attention:

- > Please make sure there is no dust or dirt on the fabric surface before rolling it back to the casing
- > The recommended working time is less than 50 seconds. The motor will enter overheating protection status and stop working for every continuous 4 minutes operation, user would need to wait for a while until the motor cool down before operating again.
- > There is no lube needed for the motor. Please be noticed that the appropriate setting is optimized which requires no further adjustment, please consult the after sales team before adjusting the limits.



## Installation

1. This projection screen should be installed at the best possible viewing position for the audience. Take out all the parts from the packaging and follow the accessories guideline to ensure you have all the parts. The parts needed will vary depending on which installation you choose to use. For installation on a wood wall or ceiling, use 5 x 40mm anchors and screws.
2. There are two ways for wall brackets to fix on the housing. As you can see on the Figure 1, which is our normal fixed way (namely factory set). While the other fixed way is to interchange the left and right wall brackets, and then fix onto the housing (namely functional installation way, as Figure 2).

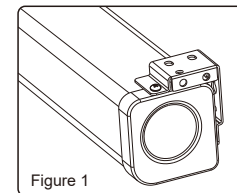


Figure 1

Factory-set installation way

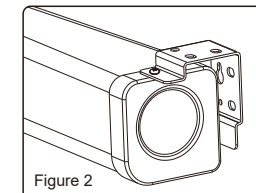


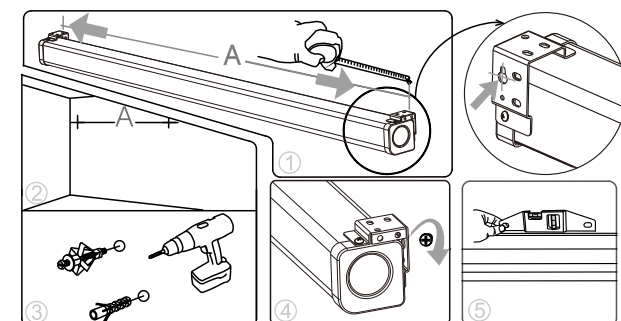
Figure 2

Functional installation way

### Installation one Factory-set installation way

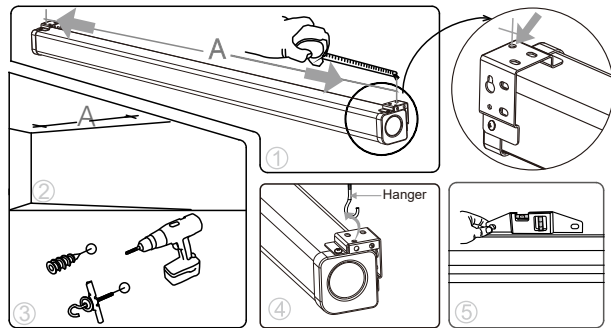
#### Wall Mount

Using a tape measure, measure the distance between the two keyholes on the casing (Figure 1). According to the measurement, use the drill to drill identical holes of the appropriate size on the wall (use a smaller drill bit than the actual screws) and ensure that it is level (Figure 2 - 3). Screw in the appropriate screws, either 5 x 40mm by itself for wood walls or with anchors for drywalls, leaving enough space at the end to hang the casing (Figure 4). To ensure that the screen is level, use a level to check (Figure 5).



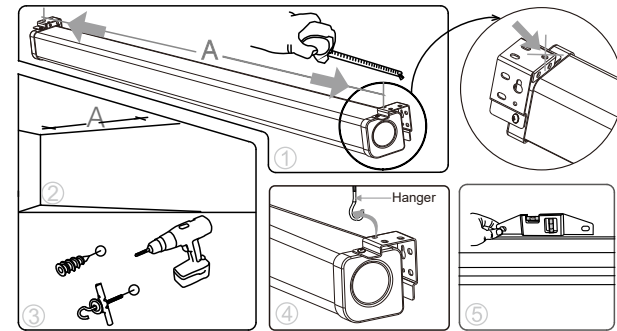
### Ceiling Mount

Using a tape measure find out the distance between the two keyholes on the casing (Figure 1 ). According to the measurement, use the drill to drill identical holes of the appropriate size on the ceiling and ensure that it is level ( Figure 2 - 3 ). Screw in the hook screws ( not provided ) , and lift the screen into the hook screws to hang ( Figure 4 ). To ensure that the screen is level, use a level to check ( Figure 5 ).



### Ceiling Mount

Using a tape measure find out the distance between the two keyholes on the casing ( Figure 1 ). According to the measurement, use the drill to drill identical holes of the appropriate size on the ceiling and ensure that it is level ( Figure 2 - 3 ). Screw in the hook screws ( not provided ) , and lift the screen into the hook screws to hang ( Figure 4 ). To ensure that the screen is level, use a level to check ( Figure 5 ).

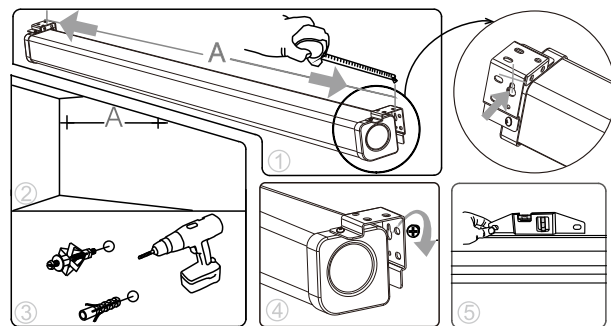


### Installation two Functional installation way

For Functional installation way, we can not only use wall mounting, ceiling mounting to fix the housing, but also can just nail the housing onto the wall and ceiling via wall brackets using spare screws. Please make sure that, using this installation way, you have to take off the factory-set wall brackets and then interchange left & right brackets before mounting.

### Wall Mount

Using a tape measure, measure the distance between the two keyholes on the casing ( Figure 1 ). According to the measurement, use the drill to drill identical holes of the appropriate size on the wall ( use a smaller drill bit than the actual screws ) and ensure that it is level ( Figure 2 - 3 ). Screw in the appropriate screws, either 5 x 40mm by itself for wood walls or with anchors for drywalls , leaving enough space at the end to hang the casing ( Figure 4 ). To ensure that the screen is level, use a level to check ( Figure 5 ).



### Wall/Ceiling Mounting Installation

