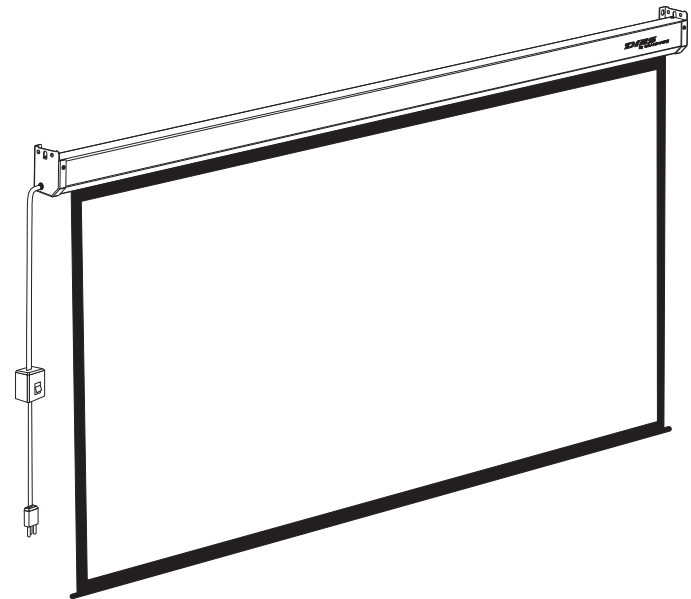


Grandview

Instruction Manual for Dias Motorized

Grandview



Model: DI-Mxx

Thank you for purchasing a Grandview projection screen.

Before use, please read instructions carefully. After installation, store instructions for future reference.

Guangzhou Grandview Creative Technology Co., Ltd

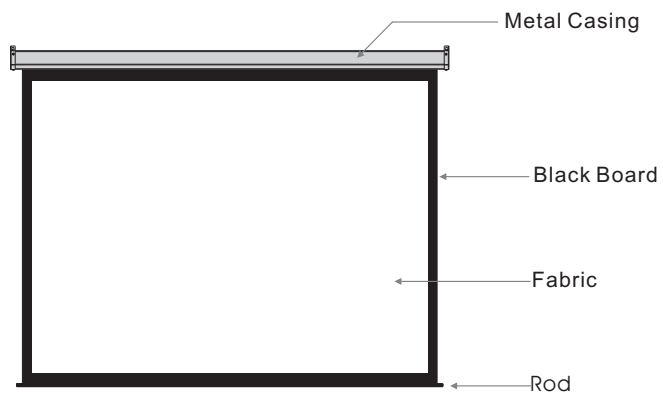
Add: No.1 Building of No.43 South International Trade Avenue, HualongTown,
Panyu District, Guangzhou China.

Tel: +8620-8489-9499 Fax: +8620-8480-5299

Web: www.grandviewscreen.com



Description



Accessories

■ ϕ 5x40mm screw with anchors (4sets)



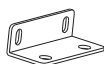
■ M8x14 screw (4sets)



■ Spring Washer (4pcs)



■ Hanger (2pcs)



■ Instruction Manual (1pc)

■ Warranty Card (1pc)

Warnings

- The ceiling or wall used for fixture installation must be secure to prevent the screens from falling.
- Please read the following as any damage to the screen surface will affect the quality of the picture:
 - 1.Avoid contact or touching the screen surface as it may cause scratches or tears.
 - 2.Do not write or draw on the surface.
 - 3.Do not damage the surface of screen by knife or finger
 - 4.Clean the screen with a soft cloth and lukewarm water. Do not use any detergent or cleaning
- Please retract the screen after using
- Make sure the Fixing screw be fastened when using the wall bracket, to avoid any damage.
- Roll up the screen after every use. Ensure that the screen is level when installing; do not pull on the sides or fold the screen.
- To prevent unnecessary damage, the operating and maintenance of the screen should be done by adults.



Ignoring the safety warnings may lead to injuries and/or damaging the product.



Fixtures should be installed in a secure place to avoid accidents or the screen falling.



Do not connect any electrical attachments or remote controls.



Roll up the screen after every use. Leaving it hanging for a long period of time may cause the fabric to loosen.



Please contact your local dealer for repairs or maintenance. Please contact our company if you have any further questions. Avoid taking apart the fixtures yourself. Loose parts may cause the screen to fall.



Refrain from hanging anything on the screen as it may cause the screen to fall.

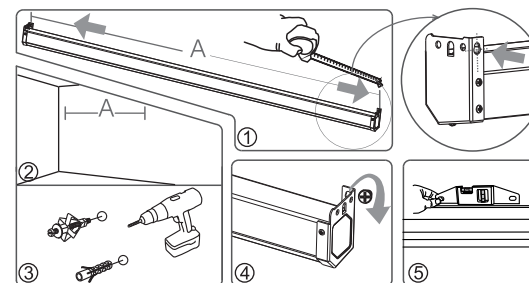
Installation

This projection screen should be installed at the best possible viewing position for the audience. Take out all the parts from the packaging and follow the accessories guideline to ensure you have all the parts. The parts needed will vary depending on which installation you choose to use. For installation on a wood wall or ceiling, use $\varnothing 5 \times 40$ anchors and screws.

Wall Mount

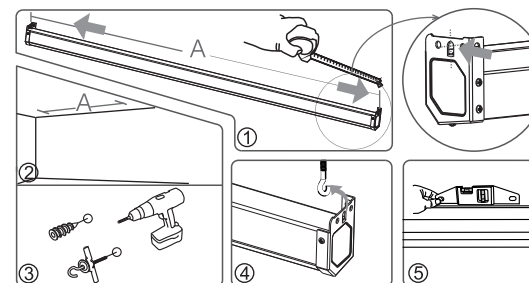
a.Wood wall: using a tape measure, measure the distance between the two keyholes on the casing (Figure 1). According to the measurement, use the drill to drill identical holes of the appropriate size on the wall (use a smaller drill bit than the actual screws) and ensure that it is level (Figure 2 & 3). Screw in the appropriate screws, use $\varnothing 5 \times 60$ wood screw for drywalls, leaving enough space at the end to hang the casing (Figure 4). To ensure that the screen is level, use a level to check (Figure 5).

b.Concreted wall: using a tape measure, measure the distance between the two keyholes on the casing (Figure 1). According to the measurement, use the drill to drill identical holes of the appropriate size on the wall (use a smaller drill bit than the actual screws) and ensure that it is level (Figure 2 & 3). Screw in the appropriate screws, use $\varnothing 5 \times 40$ tapping screw with anchor for drywalls, leaving enough space at the end to hang the casing (Figure 4). To ensure that the screen is level, use a level to check (Figure 5).

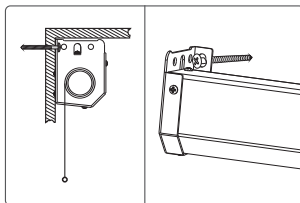


Ceiling Mount

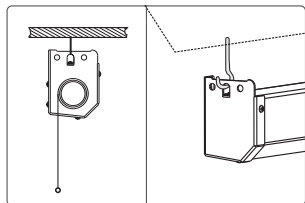
Using a tape measure find out the distance between the two keyholes on the casing (Figure 1). According to the measurement, use the drill to drill identical holes of the appropriate size on the ceiling and ensure that it is level (Figure 2 & 3). Screw in the hook screws (not provided), and lift the screen into the hook screws to hang (Figure 4). To ensure that the screen is level, use a level to check (Figure 5).



Wall Mount



Ceiling Mount



Operation

1. Manual Switch

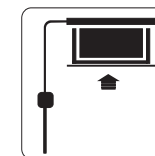
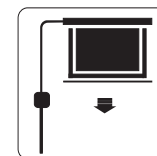
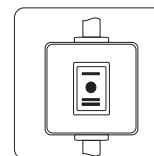
2. Remove the nylon strap under the low bar, and ensure the low bar can not get stuck with casing.

3. Connect power (rated voltage)

Turn the switch to position " — " to lower the screen; it will come down slowly. When it is all the way down, it will stop automatically

Turn the switch to position " — " to lower the screen; it will go up into the metal casing. When it is all the way up, it will stop automatically.

To stop any time while the screen is in motion, turn the switch to 0



3

Fixed installation for ceiling

1. Install hanger to the end cap of casing via M8x12 screws (note: use the washer for the M8x12 screws) (figure 1-2)

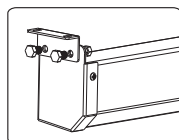


figure 1

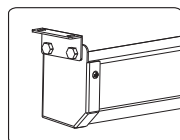
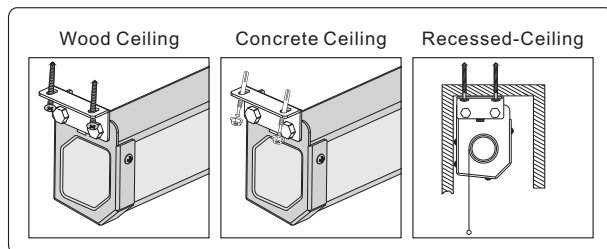


figure 2

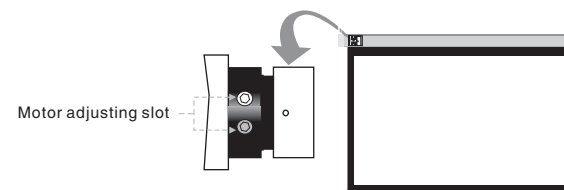
2. Install the casing (include hangers) to ceiling via wood screws or tapping screws (not accessories)

Diagram for fixing on ceiling



Attention:

- > Please make sure there is no dust or dirt on the fabric surface before rolling it back to the casing
- > The recommended working time is less than 50 seconds. The motor will enter overheating protection status and stop working for every continuous 4 minutes operation, user would need to wait for a while until the motor cool down before operating again.
- > There is no lube needed for the motor. Please be noticed that the appropriate setting is optimized which requires no further adjustment, please consult the after sales team before adjusting the limits.



4