

Grandview[®]

Hidetech BII Series Recessed Tab-Tension Screen Installation Manual

Model: HT-MI xxx II、 HT-MF xxx II

Grandview[®]



Guangzhou Grandview Creative Technology Co., Ltd
Add: No.1 Building of No.43 South International Trade Avenue, HualongTown,
Panyu District, Guangzhou China.
Tel: +8620-8489-9499 Fax: +8620-8480-5299
Web: www.grandviewscreen.com








Thank you for purchasing a Grandview product.
Before use, please read this manual carefully and keep it for future reference.

Warnings

- The ceiling or wall used for fixture installation must be secure to prevent the screens from falling.
- Please read the following as any damage to the screen surface will affect the quality of the picture:
 - 1.Avoid contact or touching the screen surface as it may cause scratches or tears.
 - 2.Do not write or draw on the surface.
 - 3.Do not damage the surface of screen by knife or finger
 - 4.Clean the screen with a soft cloth and lukewarm water. Do not use any detergent or cleaning
- Please retract the screen after using
- Make sure the Fixing screw be fastened when using the wall bracket, to avoid any damage.
- Roll up the screen after every use. Ensure that the screen is level when installing; do not pull on the sides or fold the screen.
- To prevent unnecessary damage, the operating and maintenance of the screen should be done by adults.

Attention:

- Please make sure there is no dust or dirt on the fabric surface before rolling it back to the casing .

 Warning	 Mandatory
 No Hanging Items	 Mandatory
 Prohibition of Disassembly	

Note: Do not disassemble or replace any components without authorization. For malfunctions, contact after-sales service. Specifications may change without prior notice.

Operation Guidelines

D. Dry Contact Control

When using an RJ45 8P8C connector, pins from left to right are:
Pin 3 = Stop, Pin 4 = Up, Pin 5 = Down, Pin 8 = Common (see Fig. 17).

E. DC12V Trigger Control

For DC trigger control via RJ45 8P8C connector: Pin 6 = DC 12V+, Pin 7 = DC 12V- (see Fig. 17).
When DC 12V is applied, the screen deploys; when DC 12V is disconnected, the screen retracts.

RJ45 Pin Function Table								
Pin Number	1	2	3	4	5	6	7	8
Function	RS485-B RS232-GND	RS485-A RS232-TXD	STOP	UP	DOWN	12V+	12V-	Common Lin

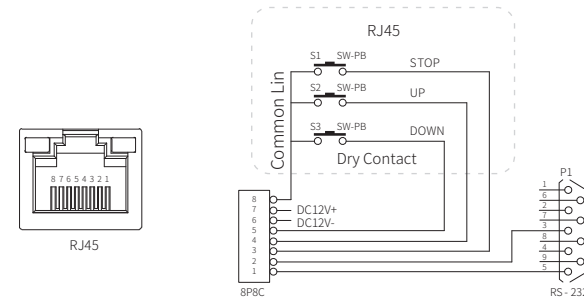


Figure 17

Operation Guidelines

● Electronic Limit Setting (Infrared Remote Control)

1. Electronic Lower Limit Setting (Extension Height)

Open the rear cover of the infrared remote control and use a pin to press the Set button (Fig. 10). The blue LED flashes once and the screen jogs, indicating entry into setting mode. Lower the screen to the desired position and press Stop, then press Stop + Down simultaneously. The screen jogs once to confirm the lower limit is set.

2. Electronic Upper Limit Setting (Retraction Height)

Open the rear cover of the infrared remote control and press the Set button with a pin. The blue LED flashes once and the screen jogs, indicating entry into setting mode. Raise the screen to the desired position and press Stop, then press Stop + Up simultaneously. The screen jogs once to confirm the upper limit is set.

C. RS485/RS232 Control:

The control output port is connected to an RJ45 (8P8C) plug, with lines 1 and 2 being the control lines. For RS485 control connection, line 1 is D-, and line 2 is D+. For RS232 control connection, please refer to the diagram shown: Figure 16.

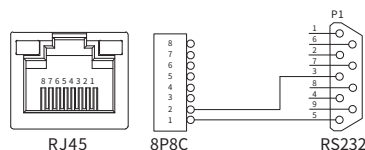


Figure 16

RS485/RS232 port settings:

- Baud rate: 2400
- Data bits: 8 bits
- Parity: None
- Stop bits: 1

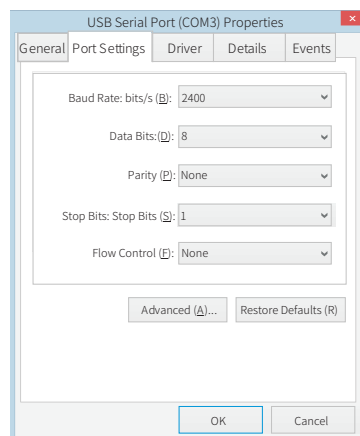
Hexadecimal control codes:

Retract: FF EE EE EE DD

Stop: FF EE EE EE CC

Extend: FF EE EE EE EE

Some central control devices require an address code to be set: FF EE EE EE AA



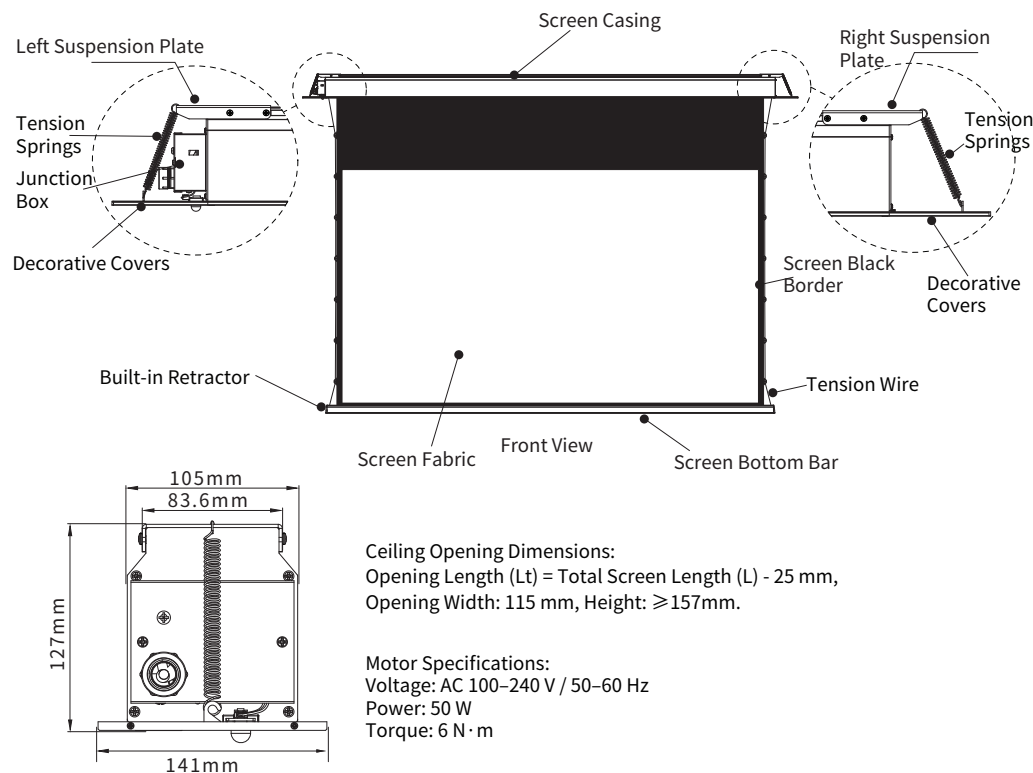
Note:

When connecting RS232 or RS485, if the screen cannot be controlled to perform related actions, please swap the two control lines.

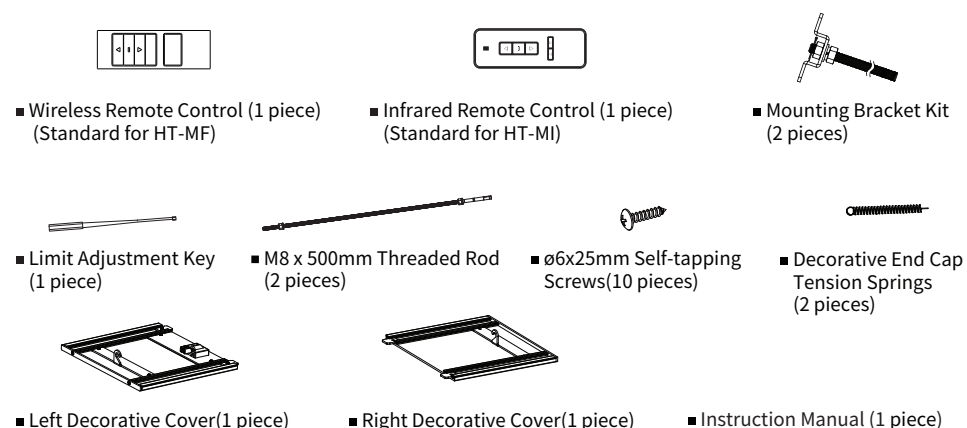
The wiring loop resistance should be less than 20Ω.

Do not run wiring parallel to strong interference sources.

Screen Structure Diagram



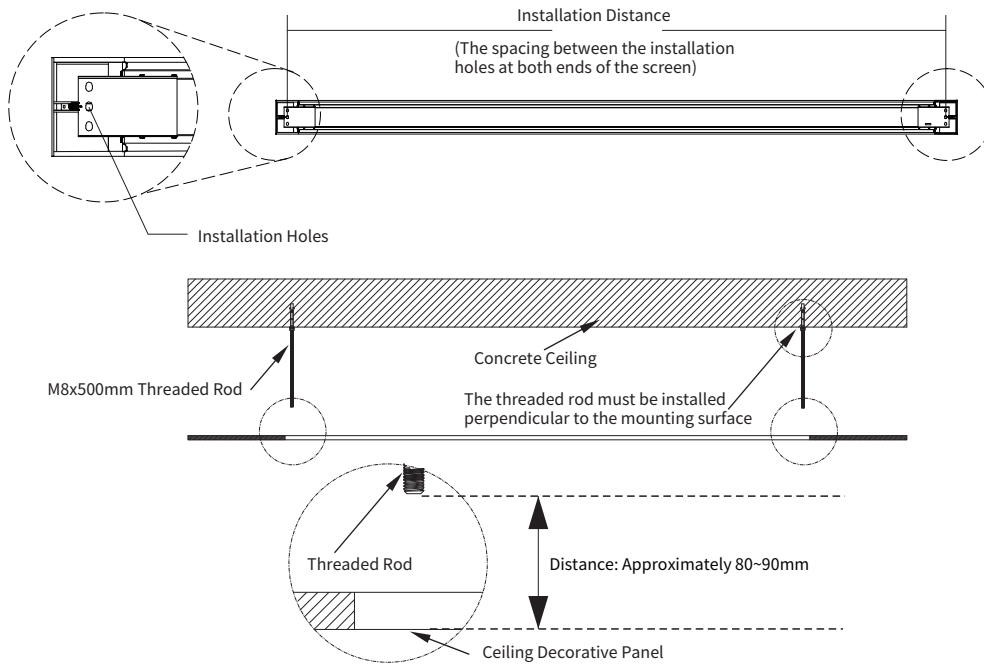
Accessory Diagram



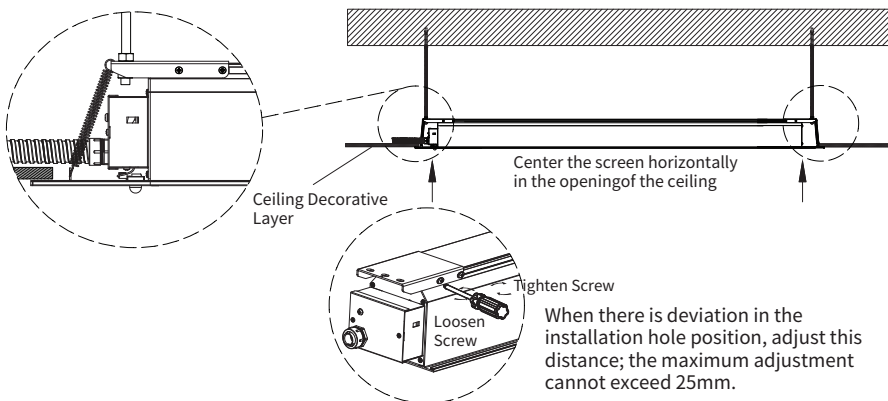
Installation Steps

Concrete Ceiling Installation:

Confirm the installation distance based on the position and height of the ceiling opening, drill vertical installation holes, insert expansion screws, screw the rod into the expansion screw, and fasten the rod. Cut the rod to the vertical distance from the installation wall to the ceiling decorative surface: 80-90mm.



- Lift the screen with caution, guiding the threaded rod through the suspension holes on each side. Attach and secure the screen with nuts and washers, then use tools to evenly tighten the nuts on both sides until the screen is firmly positioned against the ceiling.

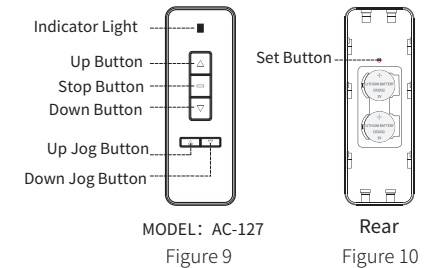


Operation Guidelines

B. Infrared Remote Control

AC-127 Infrared Remote Transmitter Button Functions: (Figure 9 -10)

1. "Up" button: Screen ascends.
2. "Stop" button: Screen stops.
3. "Down" button: Screen descends.
4. "Up Jog" button: Fine-tune screen ascent.
5. "Down Jog" button: Fine-tune screen descent.



● Remote Usage Notes:

1. Point the remote at the screen's left end cover infrared receiver (effective range: ~8 meters).
2. Remote effective angle: $\pm 30^\circ$ from the transmitter axis (Figure 11).
3. Receiver effective angle: $\pm 30^\circ$ from the receiver axis (Figures 12-13).
4. Do not block the remote's transmitter or screen's receiver.
5. Infrared signals travel in straight lines; ensure no obstructions.
6. Avoid humid or high-temperature environments.
7. Replace batteries if the remote range decreases or the indicator dims.

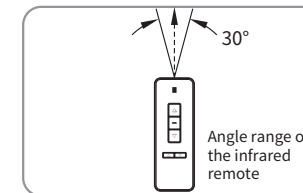


Figure 11

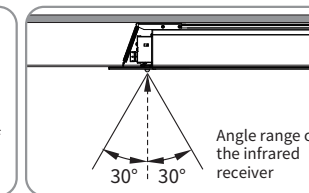


Figure 12

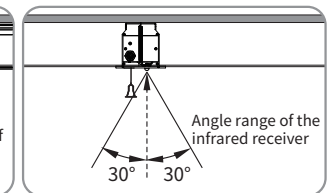


Figure 13

● Battery Installation:

When the remote signal weakens, replace the batteries (2x CR2032 button cells). Do not mix old and new batteries.

1. Turn the remote over and slide the battery cover open (Figure 14).
2. Insert batteries according to the polarity markings (Figure 15).
3. Close the battery cover.

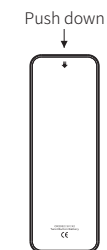


Figure 14

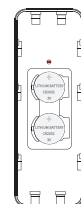


Figure 15

Operation Guidelines

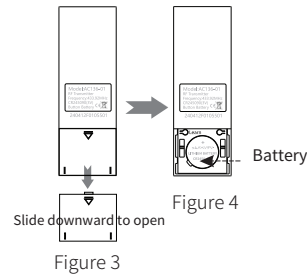
RF Remote Operating Instructions

1. Operating Frequency: 433.92 MHz
2. Operating Temperature Range: -20°C to +70°C
3. Battery Type: One CR2450 coin-cell battery
4. Battery Replacement: Replace the battery promptly when the remote signal becomes weak to ensure proper operation.

Remote Control Battery Installation

When the remote signal weakens, replace the battery as follows:

1. Slide open the battery cover on the back of the remote (Figure 3).
2. Insert the battery according to the indicated polarity (Figure 4).
3. Close the battery cover.

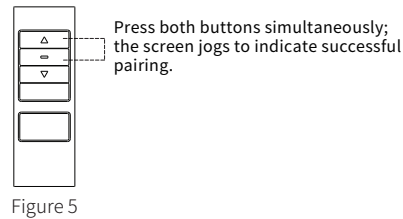


• Remote Control Pairing (Factory Paired)

Disconnect power, wait 10 seconds, then reconnect. The screen jogs once to indicate power-on. Within 10 seconds, press Stop + Up simultaneously. The screen jogs again to confirm pairing.

Note:

Odd attempts = Pairing
Even attempts = Unpairing



• Electronic Limit Setting (Wireless Remote Control)

1. Lower Limit (Extension Height)

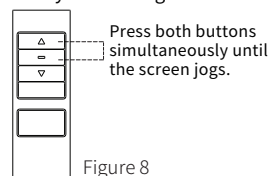
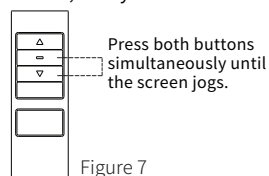
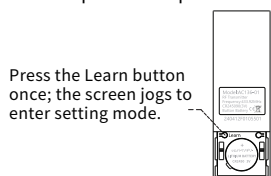
Briefly press the “Learn” button to enter setting mode; Lower the screen to the desired position and press Stop; Press Stop + Down simultaneously. The screen jogs once to confirm the lower limit (Figure 7).

2. Upper Limit (Retraction Height)

Press “Learn” to enter setting mode; Raise the screen to the desired position and press Stop; Press Stop + Up simultaneously. The screen jogs once to confirm the upper limit (Figure 8).

Note:

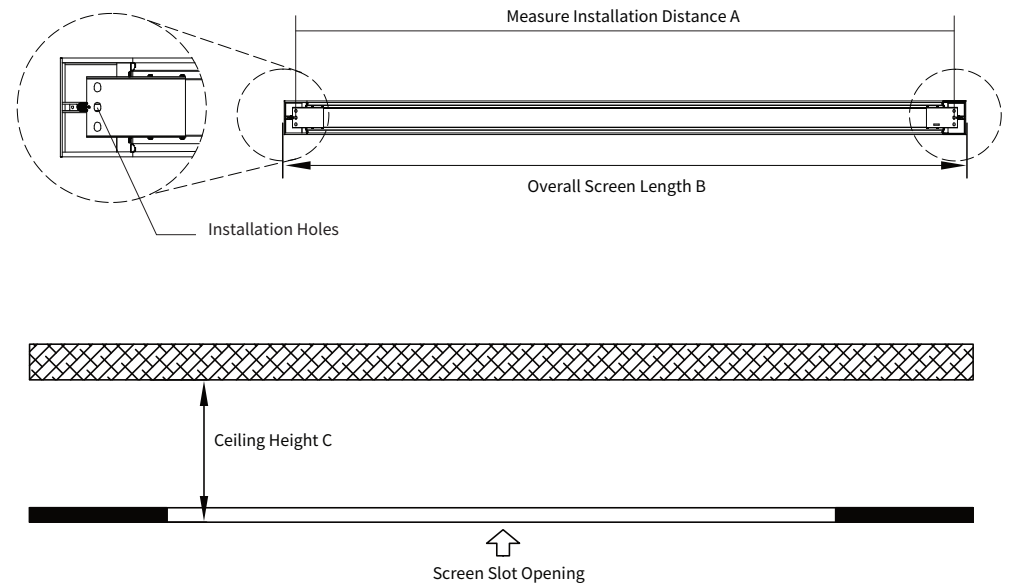
- The upper electronic limit is factory preset to an optimal position and typically does not require adjustment.
- In setting mode, the screen operates in step mode. Short-press the Up or Down button for incremental movement; press and hold for 3 seconds for continuous movement.
- In setting mode, the screen can move beyond the electronic upper or lower limits, but not beyond the mechanical limit. Repeated settings will overwrite previous values.
- If no operation is performed within 30 seconds, the system will automatically exit setting mode.



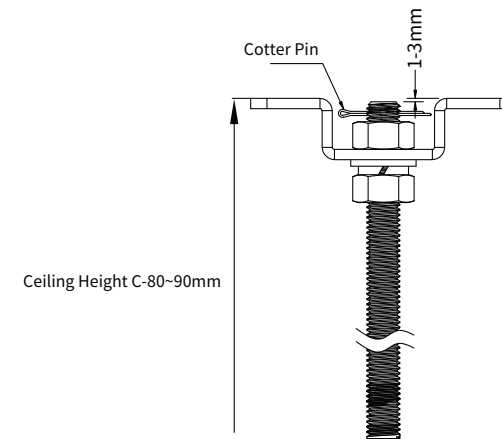
Installation Steps

Wooden Ceiling Installation (Ensure reinforcement at the suspension load-bearing points)

- Use a tape measure to measure A (mounting hole spacing on the brackets) and C (ceiling height).

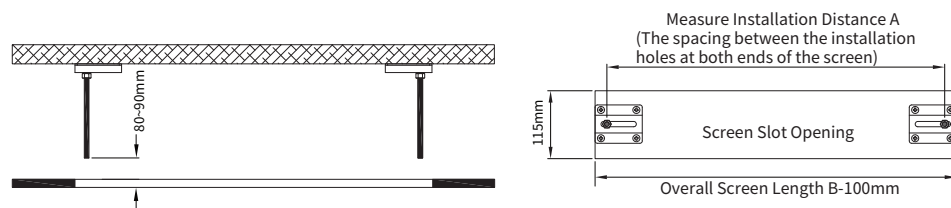


- Threaded Rod Assembly Instructions: Secure the threaded rod to the mounting plate using two M8 nuts through the elongated slot. Ensure the rod head does not protrude below the mounting plate surface. Drill a cotter pin hole at the rod head to prevent loosening and potential safety hazards. Determine the required rod length based on ceiling height and cut accordingly (refer to diagram).



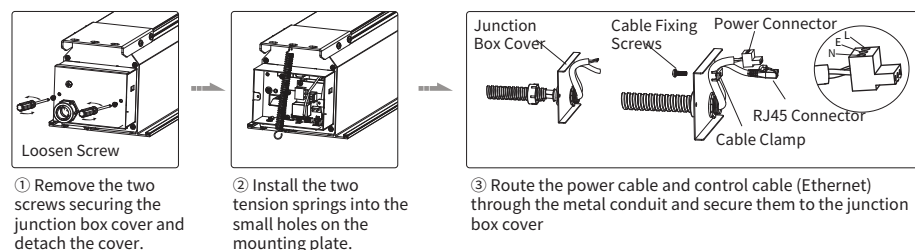
Installation Steps

- Based on the measured mounting hole distance (A), determine the position of the screw rod assembly, mark the corresponding screw holes, and drill eight $\Phi 6$ self-tapping screw holes for base installation. Fine-tune to the correct position, then tighten the screws to complete the fixation of the screw rod assembly. For screen installation, refer to the installation method on page 3 of the manual.

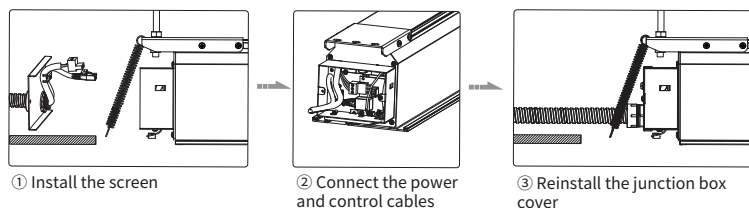


Wiring and Decorative Cover Installation

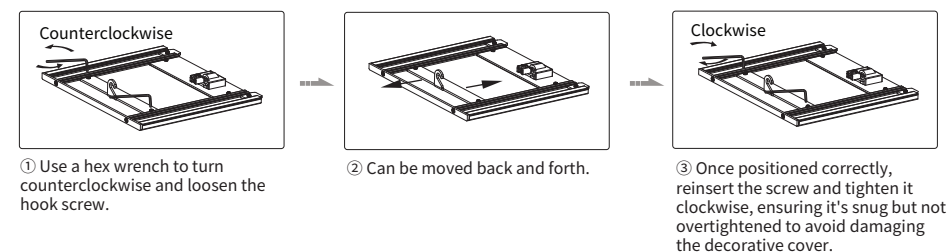
- Before installing the screen, remove the junction box cover and prepare the wiring as shown.



- After the screen installation is complete, connect the power and control cables to the control board, then reinstall the junction box cover.

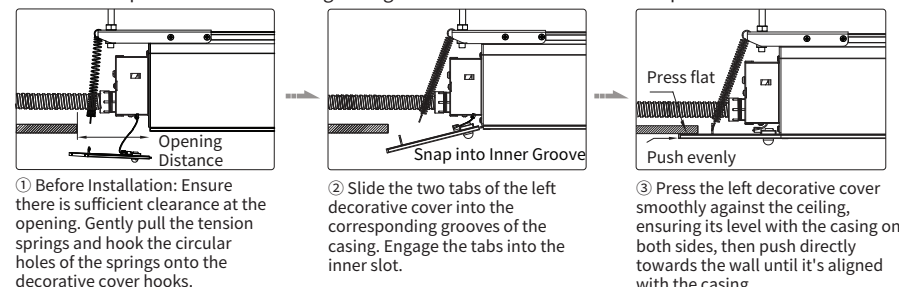


- The hook position on the decorative cover can be adjusted as follows.



Installation Steps

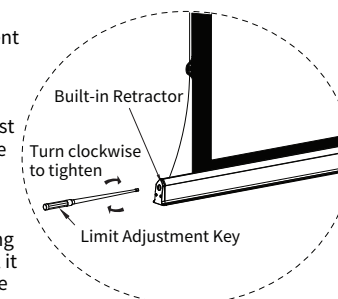
- Install the left decorative cover on the end with the power cord by following the illustrated steps below. The procedure for installing the right decorative cover mirrors this process.



Screen Tension Line Adjustment

Hold the bottom bar firmly with your hand, take the limit adjustment key, and align its smaller end with the hexagonal hole inside the retractor.

Gently press inward to adjust the tension shaft until it can rotate freely (turn clockwise to tighten, counterclockwise to loosen), adjust the tension line to the required tightness, release the pressing force to let the shaft pop out and reset, completing the adjustment. Grasp the bottom bar securely, insert the smaller end of the Limit adjustment key into the hexagonal opening of the bottom bar, and apply gentle pressure to engage. Adjust the tension shaft by rotating (clockwise to increase tension, counterclockwise to decrease) until it moves freely. Set the desired tension, then release the key to let the shaft reset, finalizing the adjustment.



Operation Guidelines

This electric projection screen supports multiple control methods. Choose the one that suits your needs:

- Wireless RF Remote Control
- Infrared Remote Control
- RS485/232 Control
- Dry Contact Control
- DC12v Trigger Control

A. Wireless RF Remote Control

AC136 Wireless Remote Control — Button Functions

- Press the Up button, screen retract to set position.
- Press the Stop button, screen will pause.
- Press the Down button, the screen will extend to set position.

